

# OPEN<sup>TM</sup>

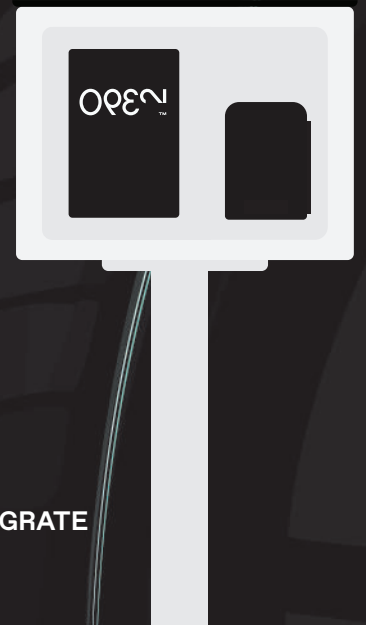
DRIVE INTO THE FUTURE WITH OPEN'S  
INNOVATIVE PAYMENT SOLUTION

## ALL-IN-ONE

 EASY TO USE AND PAY

 EASY TO MAINTAIN

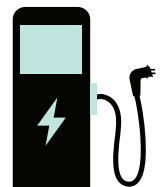
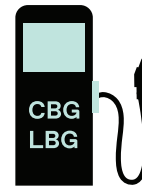
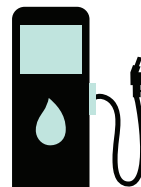
 EASY TO INTEGRATE



## ALL YOU NEED IS ALL IN ONE!

Imagine having all your  
self-service payment  
needs in a single  
standalone kiosk.

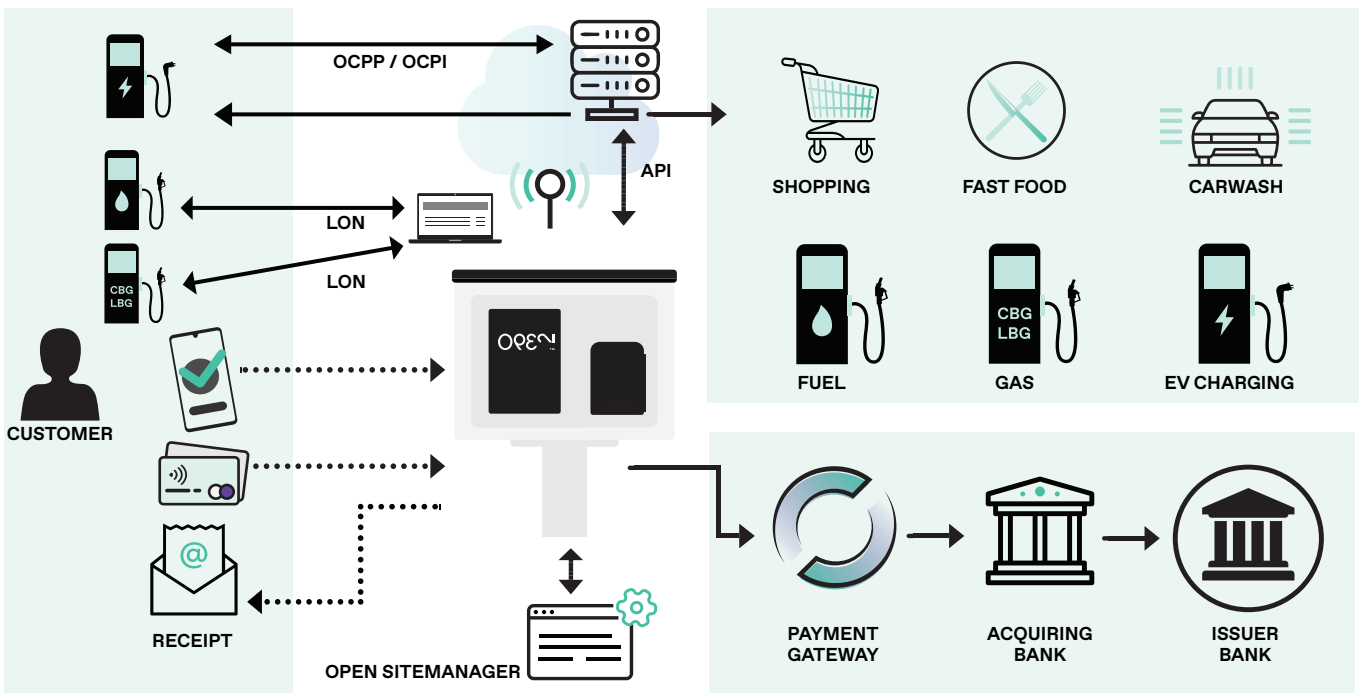
**ALL-IN-ONE** represents a  
significant advancement  
in payment innovation.  
Developed by OPEN, this  
solution simplifies payments  
and boosts operational  
efficiency, empowering  
businesses to excel in today's  
dynamic marketplace.



**ALL-IN-ONE** serves various payment needs in a cost-effective way, ranging from refueling cars and charging electric vehicles to car washing, dining, grocery shopping, and more. We can tailor this solution to meet your company's specific requirements and goals for manned or unmanned business locations.

## WHY OPEN ALL-IN-ONE?

Future-proof and cost-effective solution for the dynamic marketplace	Integration into existing infrastructure without complex installations	Authorization for multiple EV chargers without separate payment terminal for each charger
Monitoring and control remotely from anywhere with SiteManager	Integration into existing petrol forecourt for a new revenue source	Seamless payment process accepting credit/debit cards, mobile wallets and QR codes
Due to its scalability, you need only one payment kiosk to cater to all your payment needs	Built to withstand harsh Nordic outdoor conditions	Payment terminal independent solution



**EASY TO MAINTAIN**  
**ALL-IN-ONE** is equipped with OPEN SiteManager, a cloud based system that makes it easy to analyze, monitor, and control remotely. OPEN SiteManager helps you keep an eye on things and offers cost-effective maintenance support through OPEN's professional remote services.

**UNMANNED PAYMENT TERMINAL**  
**ALL-IN-ONE** is highly customizable to support various payment terminals with contactless features and specific requirements for different countries. You can easily set up Tap and PIN with compact payment terminals. It is a payment-independent solution.

**EASY TO INTEGRATE**  
**ALL-IN-ONE** seamlessly integrates with your current infrastructure, making it easy to expand traditional forecourts to support EV charging services, complete with payment options, loyalty programs, and bonuses.

**EASY PAYMENTS**  
**ALL-IN-ONE** makes payments easy and simple to use. Its smooth payment process enhances efficiency at your location, accommodating all accessible payment methods, including debit/credit cards.

## SPECIFICATIONS

<b>Power PC</b>	• Fanless embedded system with Intel®
<b>Display</b>	• 10.1" TFT (800x1280) PCAP Touch
<b>Payment terminal</b>	• Castles S1U2, PAX IM30, Payter Apollo and ApolloMax
<b>Connection</b>	• 4G or ethernet LAN RJ-45
<b>Operating voltage</b>	• 230 VAC, 50Hz - approx. 40W (with heater 100 VA)
<b>Outline dimensions</b>	• 380(h) x 500(w) x 195(d) mm • 1300(h) with stand
<b>Weight</b>	• 13 kg, 25 kg with stand
<b>Locking and key</b>	• Industrilås Lock and Compression latch
<b>Colour (RAL Classic)</b>	• Powder painting, Electro-Galvanized Steel
<b>Operating Temperature</b>	• -30°C ~ 60°C (rugged)
<b>Humidity</b>	• 10% ~ 95%, non-condensing